

DC Water Clean Rivers Project
 5000 Overlook Ave, SW
 Washington, DC 20032

Thank you

Constructed Green Infrastructure Facilities

Bioretention

Also known as a rain garden, bioretention capture and clean stormwater runoff allowing it to infiltrate into the ground and slowly releases any excess runoff into the combined sewer system.



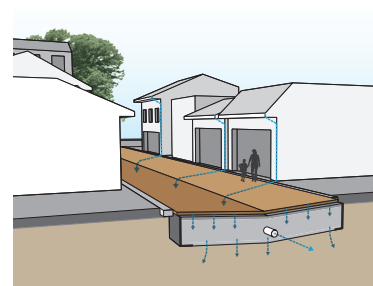
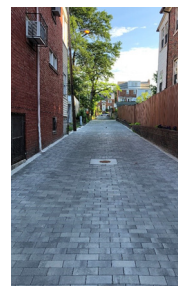
Planter Bioretention



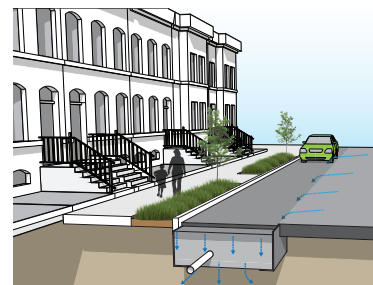
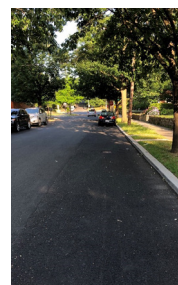
Curb Extension Bioretention

Permeable Pavement

Permeable pavement also allows stormwater runoff to infiltrate through the pavement and into the ground and slowly releases any excess runoff into the combined sewer system.



Alley Permeable Pavement (also known as Green Alley)



Parking Lane Permeable Pavement

DC Water thanks you for your patience during construction of green infrastructure. We hope you enjoy the improvements to your neighborhood!





DC Water recently constructed green infrastructure (GI) in your neighborhood to significantly reduce the level of pollution to the District's waterways produced by the discharge of stormwater runoff and sanitary sewer flows, known as combined sewer overflows (CSOs), from the combined sewer system during heavy rain and snow events. The project involved the construction of innovative GI technologies that include bioretention (rain gardens) in planter strips and curb extensions, permeable pavement on streets and alleys, and downspout disconnection (including rain barrels). These facilities manage stormwater by taking advantage of the earth's natural processes, such as allowing the water to infiltrate into the soil, evaporate into the air, or for plants to use the water and transpire it as vapor. In addition to managing stormwater, GI contributes to beautifying the streetscape and makes it safer and more welcoming for pedestrians, bicyclists and drivers.

MAINTENANCE

To ensure continued performance of GI and the associated reduction of combined sewer overflows, the GI facilities must be maintained regularly. DC Water is responsible for maintenance of DC Water GI facilities. If you notice any issues with the facilities, please contact DC Water and note the Facility Identification (ID) located on the sign. Facility ID signs can be found at each GI facility that DC Water constructed in your neighborhood. Help us ensure that the facilities operate as designed.

Please Avoid Damaging Activities

- Chipping Pavement
- Disrupting Plants
- Pouring Concrete or Other Chemicals
- Littering
- Placement of Mulch or Soils

Green Infrastructure (GI) Facility ID Signs



BIORETENTION

report issues: 202-354-3600
or custserv@dcwater.com
learn more:
dcwater.com/green

BR000



PERMEABLE PAVEMENT

report issues: 202-354-3600
or custserv@dcwater.com
learn more:
dcwater.com/green

PP0000

Facility ID

Permeable Pavement Maintenance

Parking Lanes

Similar to street sweeping, parking lane permeable pavement facilities are maintained using regenerative air vacuum sweepers. Unless otherwise noted, DC Water will perform permeable pavement cleaning once a month on the third Monday, Tuesday, or Wednesday of each month, March through December from 9:30am-11:30am. During this time, parking will be restricted in the streets where parking lane permeable pavement is being maintained. Alternate side parking will be used to avoid impacting parking on both sides of the street at the same time. Signs are posted informing you of where parking will be restricted during this maintenance activity.

Alleys

To maintain proper facility performance, alley maintenance includes utilizing a regenerative air vacuum sweeper to clean the joints between the pavers. DC Water will perform alley permeable pavement cleaning once a month, March through December.

Note: Maintenance of permeable pavement in the alley will not impact parking.



Bioretention Maintenance

Bioretention facilities will also be maintained once a month and as needed. Bioretention maintenance includes weeding, sediment removal and cleaning of the rocks. The bioretention facilities were designed to have a natural appearance with varying plant heights and textures throughout each season. The plants in bioretention facilities are newly planted and may seem sparse. Please be patient as plants require at least 2 growing seasons to become established. Plant growth will be monitored during monthly maintenance and plants will be replanted as needed.

Note: Maintenance of bioretention facilities will not impact parking.



FOR MORE INFORMATION, PLEASE CONTACT:

Public Outreach Officer:

Amanda Zander
amanda.zander@dcwater.com | (202) 787-4142

Project Website: dcwater.com/green
DC Water 24-hr Emergency: (202) 612-3400
DC Water Office of External Affairs: (202) 787-2200