



MedStar Georgetown
University Hospital

Knowledge and Compassion
Focused on You

Burleith Citizens Association 2017 Annual Meeting

MGUH Medical | Surgical Pavilion Update

MGUH Surgical Pavilion Background & History

Challenge with Current Footprint

- Aging Infrastructure
 - Main Hospital building built in mid-1940s
 - Critical Care Tower/ORs built in mid-1970s
 - Major facility upgrades needed
- Capacity issues
 - Overcrowded and antiquated Emergency Room
 - Eliminate full capacity beds
- Unable to modernize given the limited existing infrastructure and footprint
- Building for Medical Excellence
 - Patient and clinician needs and expectations
 - Modern technology and infrastructure to support advanced, state of the art medicine and care

The Solution: MGUH Medical | Surgical Pavilion

MGUH Medical | Surgical Pavilion

Program Overview

- New Surgical Platform – 32 OR/Procedure Rooms
- New Critical Care Pavilion – 156 Private Patient Rooms
- New Emergency Department – 32 Rooms
- Dedicated Imaging – CT, MRI, Radiology & Ultrasound
- Underground Loading / Materials Management
- New Central Sterile Processing Department
- 3 Levels of New, Underground Patient Parking
- Rooftop Helipad with Direct Access to OR and ED

MGUH Surgical Pavilion – Process with Community and Stakeholders

Georgetown Community Partnership (“GCP”)

1. GCP Members: The Community and Stakeholders

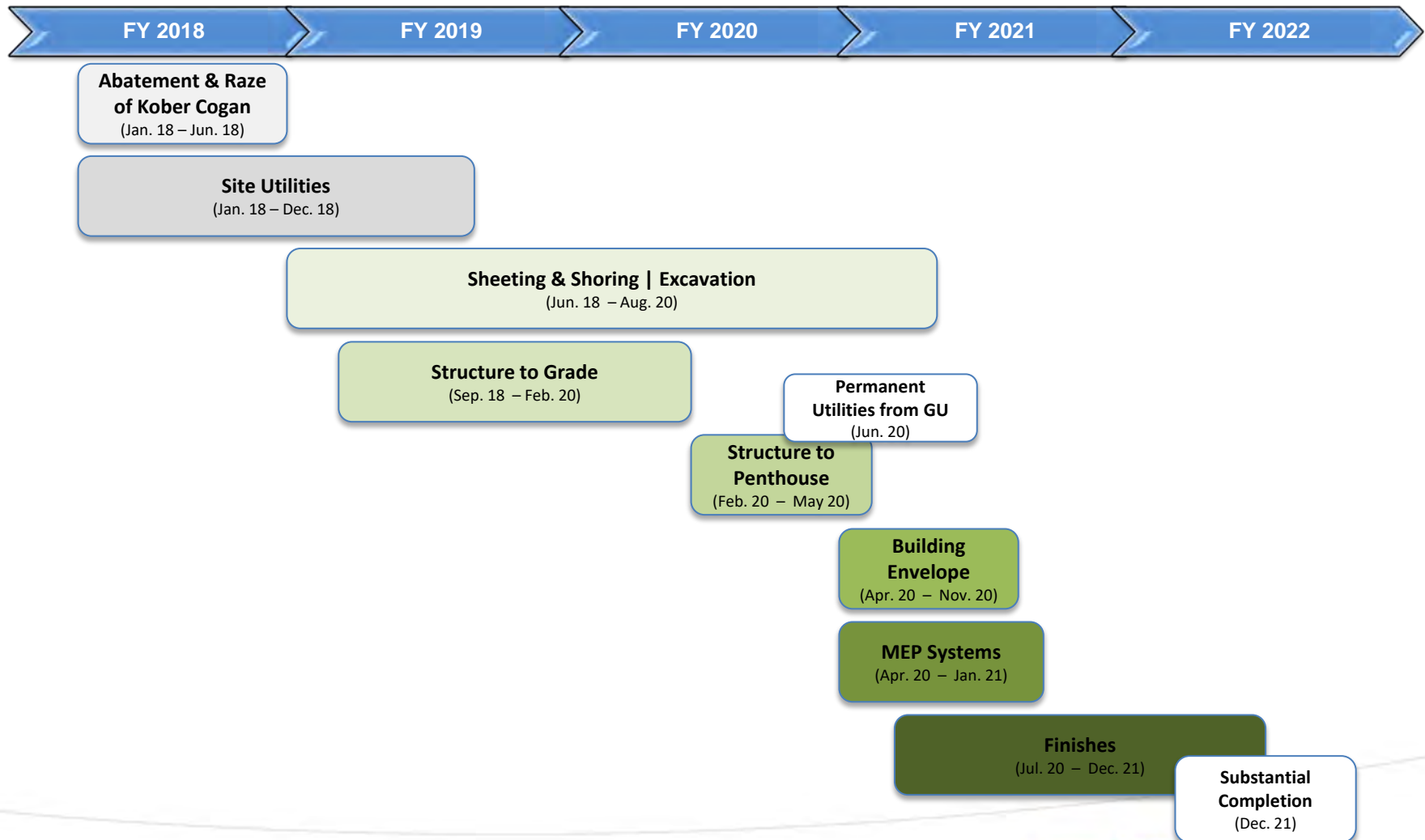
- Georgetown University
- Student Body (GUSA)
- ANC 2E & ANC 3D Commissioners
- Citizens Association of Georgetown
- Burleith Citizens Association
- Foxhall Community Citizens Association
- MedStar Georgetown University Hospital

2. Consensus Driven Process

- Comprehensive Construction Management Plan
- Helicopter Noise Abatement
- Emergency Department Needs
- Traffic Mitigation Plan
- Approval Needs and Zoning Commission Process
- Design for Gate 1

Project Construction Timeline

(MedStar Health Fiscal Year: July 1 – June 30)



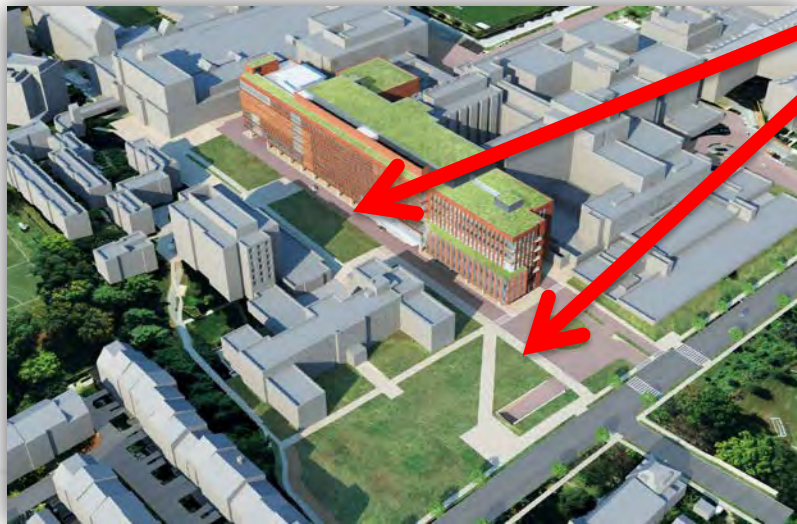
Date: May 1, 2017

Knowledge and Compassion **Focused on You**

Current vs. Improved Conditions



Increased Green Space



Site Plan - Future



Conceptual Rendering: HKS | Shalom Baranes JV

Knowledge and Compassion **Focused on You**


MedStar Georgetown
University Hospital

Site / Exterior Design



Conceptual Rendering: HKS | Shalom Baranes JV

Knowledge and Compassion **Focused on You**


MedStar Georgetown
University Hospital

Construction Site Plan – Phase I



Approximate MGUH Construction Area

Construction Site Plan – Phase II



Approximate MGUH Construction Area

Construction Management Plan

Guiding Principles

- Complete transparency of all information and data relating to construction;
- Clear lines of accountability and points of contact for the Project;
- Communication procedures and methods that maximize effectiveness for the community;
- Comprehensive staging plan that minimizes community impact and traffic, including:
 - Construction workers brought to the site via shuttles and no workers parking in the community;
 - Truck traffic reduction strategies using flaggers and wireless technology, eliminating idling of trucks on Reservoir Road and in the vicinity;
 - Coordination of hauling, equipment and job/material deliveries utilizing a specific, controlled route; and,
 - Construction gate concierge to limit disruption on Reservoir Road, to prevent unauthorized access, construction activity and parking, and to serve as an ambassador for the Project to any patients, associates, visitors and students;

Guiding Principles (continued)

- Off-site parking to replace the loss of on-site parking during construction;
- Trash and vermin mitigation strategies and controls;
- Noise reduction strategies for the defined Quiet Periods in addition to the entire construction process;
- Repairing and resurfacing any part of Reservoir Road or other roads within the community damaged by construction traffic; and
- Providing a safe environment for all patients, students, neighbors, associates and construction workers.

Questions?



Conceptual Rendering: HKS | Shalom Baranes JV